



Cross-African collaboration against current and emerging health challenges



Initiative to
Develop
African
Research
Leaders

BRIEF DESCRIPTION

The IDeAL programme is a multi-disease, multidisciplinary research and capacity-building initiative hosted by KEMRI-Wellcome. It was established to address the lack of research training programmes that can cultivate locally and internationally credible African health researchers. IDeAL is one of the SFA Foundation's 14 initiatives under the Developing Excellence in Leadership, Training, and Science in Africa (DELTAS Africa) Phase 2. The first phase of IDeAL ran from 2015-2020, prior to which the programme operated as a Wellcome Strategy Award for capacity building.

IDeAL Phase 2 is funded until 2027 with USD 4.4 million from the Science for Africa Foundation with an expanded focus beyond East Africa through formal partnerships with the Centre for Infectious Diseases Research in Zambia (CIDRZ), Epicentre in Niger, the University of Glasgow and Oxford in the UK, as well as Strathmore and Pwani universities in Kenya. Collectively, this diverse partnership provides access to high-quality collective research resources, joint supervision, mentorship, and learning opportunities. The Initiative takes pride in this growth, viewing it as a collective effort to develop a critical mass of African research leaders who tackle Africa's unique health challenges.

IDeAL continues to offer highly competitive scholarships to support undergraduate and graduate internships, as well as Master's, PhD, and post-doctoral training. Our portfolio of research capacity-building activities aims

to generate a critical mass of African health research leaders. This mission is driven by the realisation that the interventions necessary for achieving universal health coverage in Africa—a crucial factor in the continent's socio-economic growth—are best crafted by well-trained African research scientists who possess a profound understanding of the region's unique challenges IDeAL.

The unique aspect of these programmes lies in the immersion of the Fellows within a highly dynamic research environment at the KEMRI-Wellcome Trust Research Programme and the partner institutions of IDeAL. This immersion guarantees access to state-of-the-art research infrastructure, supervision and mentorship from internationally acclaimed researchers, along with enhanced technical and generic skills training. Furthermore, these initiatives place a strong emphasis on post-training support to enhance the rate of transition for the fellows within the research and academic career pipeline. This approach not only amplifies the voices of African researchers but also positions scientists to perform research that is relevant, impactful and responsive to local needs.

IDeAL is designed to address specific aspects of research development and capacity-building through the principles of 1) scientific quality, 2) research leadership, 3) research management, culture, and infrastructure, and 4) scientific citizenship, as envisioned by the DELTAS Africa Initiative of the SFA Foundation.





VISION, MISSION AND VALUES



VISION

African-led research solving African and global health problems



MISSION

To create a critical mass of African research leaders



VALUES

- Long-term horizon
- Quality over quantity
- Inclusivity and equity

OUR SCHEMES

School Leavers' Attachment Scheme (SLAS): We offer 3 months of quality career guidance and mentorship targeting Kilifi's top students who have just completed their high school studies.

Undergraduate Attachment: Attachments are offered to students in their third or fourth year as part of their university training. This programme provides a platform for students to interact with infrastructure, researchers, and scientists under quality supervision.

Postgraduate Diploma (PGD): This learning program, offered jointly by KEMRI-Wellcome Trust Research Programme and Pwani University, equips graduates with theoretical and practical knowledge of the philosophy

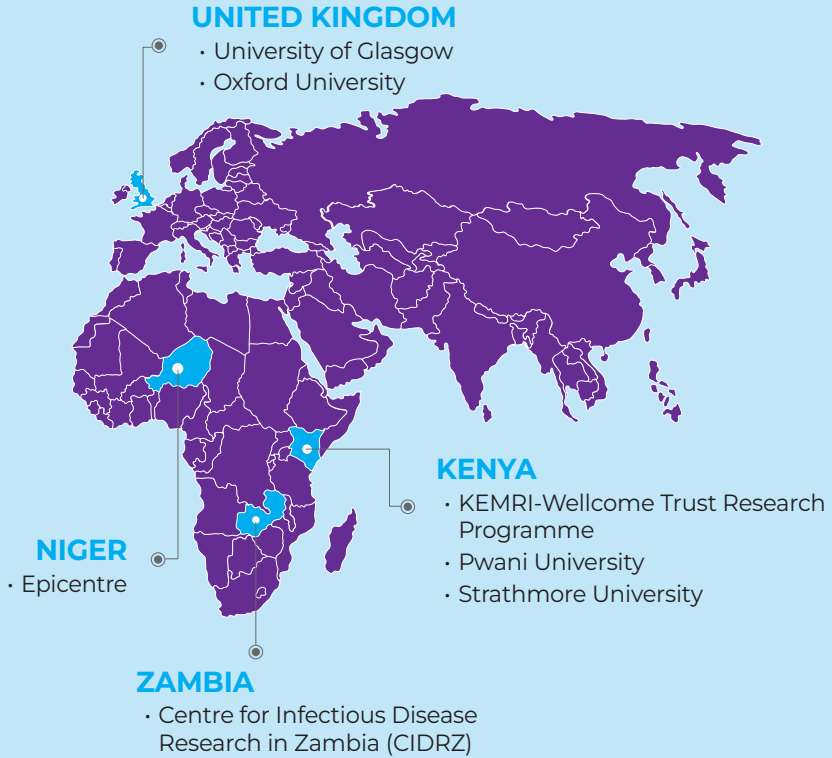
and practice of research.

Master's Programme: We offer a high-quality master's program in Immunology in collaboration with Pwani University. This program provides a first-class foundation for further research in collaboration with project leads and universities.

PhD Programme: We offer a 4-year training program offered in collaboration with leading local and international universities. It provides high-quality supervision and advisory.

Postdoc Programme: This is a defined career path, beginning with early postdocs and continuing through mid- and senior research fellows to principal research Fellows.

OUR FOOTPRINT



OUR PARTNERS

KEMRI | Wellcome Trust



The Initiative to Develop African Research Leaders (IDeAL)

Hospital Road, P.O. Box 230, Kilifi

Email: ideal_info@kemri-wellcome.org

Phone: +254 709 983000

[Twitter](#) [Instagram](#) [LinkedIn](#) [YouTube](#) [Facebook](#) [WhatsApp](#) | @IDeAL_KEMRI_WT